

ASX Code: CRE
TSX Code: CRA
FFT Code: CRE5

SHARE INFORMATION

ASX Share Price: A\$0.135
Issued Shares: 620.1m
Market Cap: A\$83.7m
Options unlisted: 35.9m

FULLY DILUTED BASIS

Shares: 656.0m

CONTACT DETAILS

Level 2, 40-48 Subiaco Square
Subiaco WA 6008
Phone: +61 8 6380 7100
Fax: +61 8 6380 7199
info@crescentgold.com
www.crescentgold.com
ABN 49 087 360 996

HIGH GRADE DRILLING RESULTS AT LAVERTON

13 July 2010

By Electronic Lodgement

Company Announcements Office
Australian Stock Exchange Limited
2 The Esplanade
PERTH WA 6000

Not for Distribution to United States newswire services or for dissemination in the United States.

HIGH GRADE DRILLING RESULTS AT LAVERTON

Crescent Gold Limited (ASX:CRE, TSX:CRA, FFT:CRE5), the growing Australian gold miner and resources developer today reported further encouraging results from reverse circulation (RC) drilling at the Company's Craiggimore, Mary Mac and Mary Mac South gold projects near Laverton in WA.

The current drill programme is aimed at extending the known resources on these project areas.

Since Crescent's previous announcement on 4th May 2010, a further **111 significant intersections** have been recorded, including:

- 26m at 9.6 g/t gold,
- 4m at 17.3 g/t gold,
- 17m at 4.3 g/t gold,
- 5m at 13.1 g/t gold,
- 4m at 11.7 g/t gold,
- 10m at 7.3 g/t gold.

(A full table of the significant intercepts > 5g/m received in this programme is included below)

Managing Director, Roland Hill, commented "The Laverton Goldfields is a great gold address, and the current programme is yielding consistently good results. The latest round of drilling confirms the regions exploration potential."

"The continued excellent drilling results not only confirm the Craiggimore and Mary Mac line of lode deposits as near term development projects but highlights the outstanding exploration potential of the Laverton district."

The Craiggimore / Mary Mac line of lode, located 3km southwest of Laverton and approximately 15kms from Barrick's Granny Smith Mill (BGSM), consists of the Craiggimore, Mary Mac and Mary Mac South gold deposits on mining lease 38/270, held 100% by Crescent Gold Limited.

Since the start of 2010, a total of 239 RC drill holes for 20,025m have been drilled into the Craiggimore and West Laverton projects to infill and extend the known mineralisation.

A diamond drill (DDH) programme on the Craiggimore project has just been completed to test targets at depth and for various structural assessments. Laboratory analysis is pending and will be reported shortly.

Regards

Crescent Gold Limited



Roland Hill
Chairman & Managing Director

Additional information related to the Company is available for review at sedar.com or on the Company's website at www.crescentgold.com.

For further information please contact Roland Hill or Mark Tory in Australia on +61 8 6380 7100, or Renee Brickner in Canada on +1 604 802 6806.

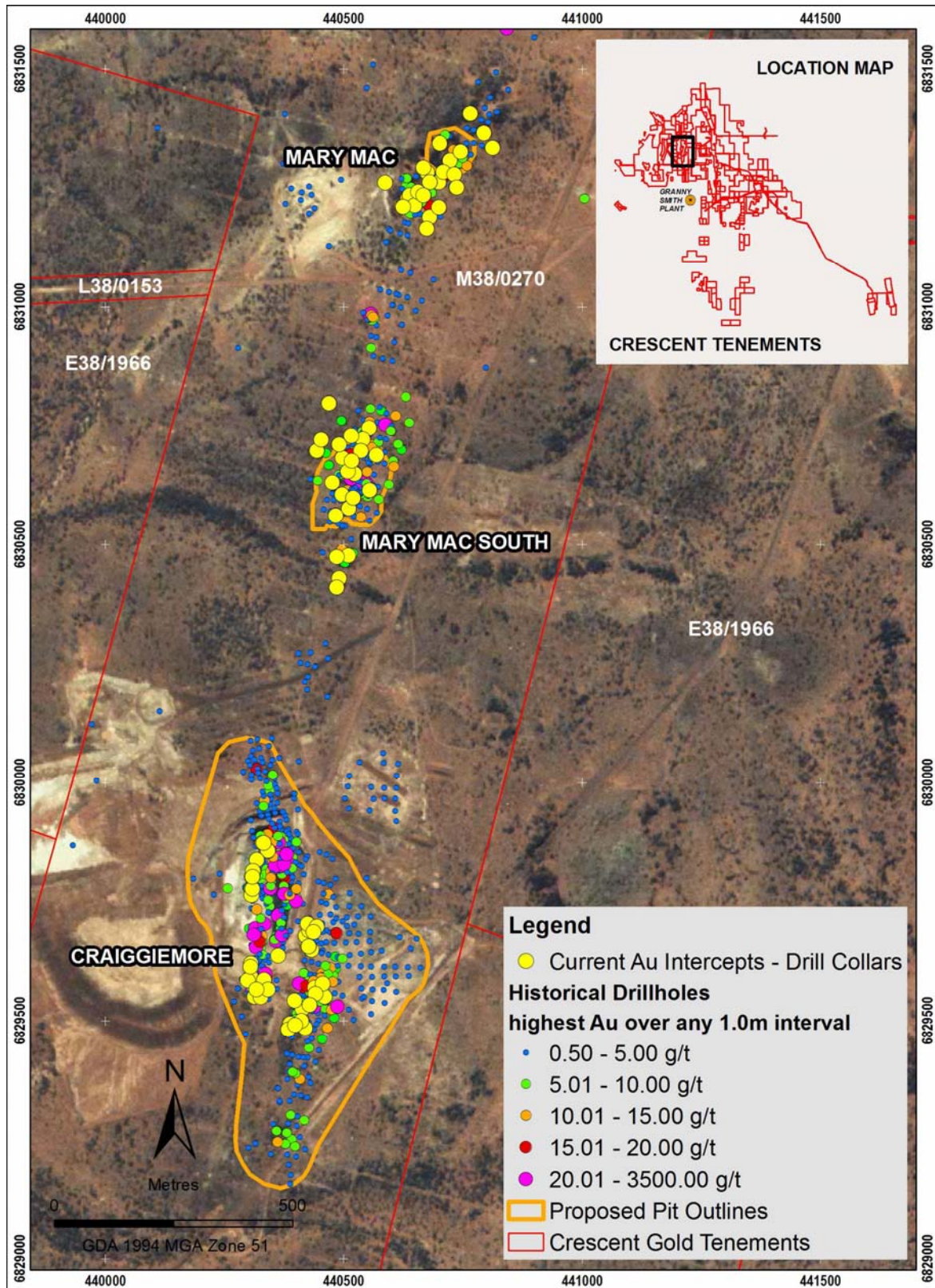
The tables below list significant results from analyses received to date. Selection criteria were, 0.8g/t gold lower cut-off, minimum down-hole width of 2m and maximum down-hole internal dilution of 2m. The tables list only those intercepts with a gram-metre product greater than or equal to 5 gram-metres.

MARY MAC				
HOLE No.	FROM (m)	TO (m)	WIDTH (m)	GRADE (g/t Au)
MMRC006	99	111	12	6.27
MMRC027	40	51	11	6.15
MMRC027	52	57	5	13.11
MMRC009	56	69	13	4.91
MMRC007	30	48	18	2.68
MMRC026	97	111	14	2.83
MMRC029	47	55	8	4.9
MMRC026	45	56	11	3.03
MMRC024	9	17	8	3.57
MMRC013	32	45	13	1.99
MMRC011	23	26	3	7.8
MMRC037	74	84	10	2.05
MMRC029	80	85	5	3.44
MMRC040	30	33	3	5.72
MMRC031	55	60	5	3.22
MMRC007	12	21	9	1.62
MMRC011	30	34	4	3.5
MMRC021	26	32	6	2.18
MMRC016	92	95	3	4.35
MMRC005	26	30	4	3.17
MMRC002	16	21	5	2.37
MMRC010	63	67	4	2.91
MMRC001	104	109	5	2.1
MMRC002	47	51	4	2.62
MMRC005	17	21	4	2.56

MARY MAC SOUTH				
MMSRC135	33	43	10	3.89
MMSRC134	63	76	13	2.91
MMSRC147	60	76	16	2.31
MMSRC136	35	44	9	3.41
MMSRC156	12	24	12	2.24
MMSRC158	68	76	8	3.24
MMSRC135	44	55	11	2.1
MMSRC157	21	26	5	4.27
MMSRC157	52	63	11	1.9
MMSRC151	103	109	6	3.3
MMSRC141	48	55	7	2.69
MMSRC129	18	23	5	3.69
MMSRC126	84	94	10	1.8

CRAIGGIEMORE				
HOLE No.	FROM (m)	TO (m)	WIDTH (m)	GRADE (g/t Au)
CMRC319	30	56	26	9.57
CMRC313	5	22	17	4.32
CMRC261	63	73	10	7.31
CMRC310	13	21	8	8.91
CMRC325	47	51	4	17.22
CMRC322	36	44	8	7.26
CMRC326	31	38	7	8.25
CMRC328	46	54	8	6.67
CMRC249	138	142	4	11.65
CMRC298	0	9	9	4.66
CMRC276	21	36	15	2.57
CMRC267	106	112	6	6.39
CMRC316	29	38	9	3.92
CMRC260	98	103	5	6.34
CMRC321	53	60	7	4.26
CMRC266	73	77	4	6.69
CMRC279	5	13	8	3.05
CMRC246	128	132	4	5.88
CMRC296	10	14	4	4.78
CMRC269	63	66	3	6.05
CMRC312	19	23	4	4.19
CMRC256	25	33	8	2.06
CMRC284	57	59	2	7.79
CMRC284	66	68	2	7.78
CMRC303	11	14	3	4.53
CMRC252	68	72	4	2.73
CMRC317	16	20	4	2.69
CMRC263	6	10	4	2.54
CMRC248	0	4	4	2.43
CMRC280	63	67	4	2.28
CMRC247	0	3	3	2.97
CMRC278	68	71	3	2.96

Map: Craiggie Development Project Drilling Results



The information in this report that relates to Exploration Results and Mineral Resources is based on information compiled by Mr Neal Leggo, who is a Member of the Australian Institute of Geoscientists. Neal Leggo has sufficient experience which is relevant to the style of mineralisation and type of deposit under consideration and to the activity which he is undertaking to qualify as a Competent Person as defined in the 2004 Edition of the "Australasian Code for Reporting of Exploration Results, Mineral Resources and Ore Reserves" and a Qualified Person under "Canadian National Instrument 43-101 Standards of Disclosure for Mineral Projects". Neal Leggo consents to the inclusion in the report of the matters based on his information in the form and context in which it appears. Neal Leggo is employed by Crescent Gold Limited.